

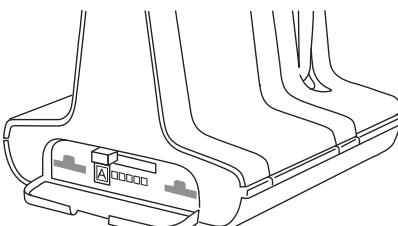
Savi Office (WO100, WO200, W700 etc) & OLI Connection Diagram for IQ333EHS

Step 4



Set Desk Phone Speaking Volume to "1" and Desk Phone Listening Volume to "3"

Step 3



Set Configuration Switch to "A"

Step 2


Set Headset Mic Adjust Control fully clockwise to Recommended Setting Position as shown



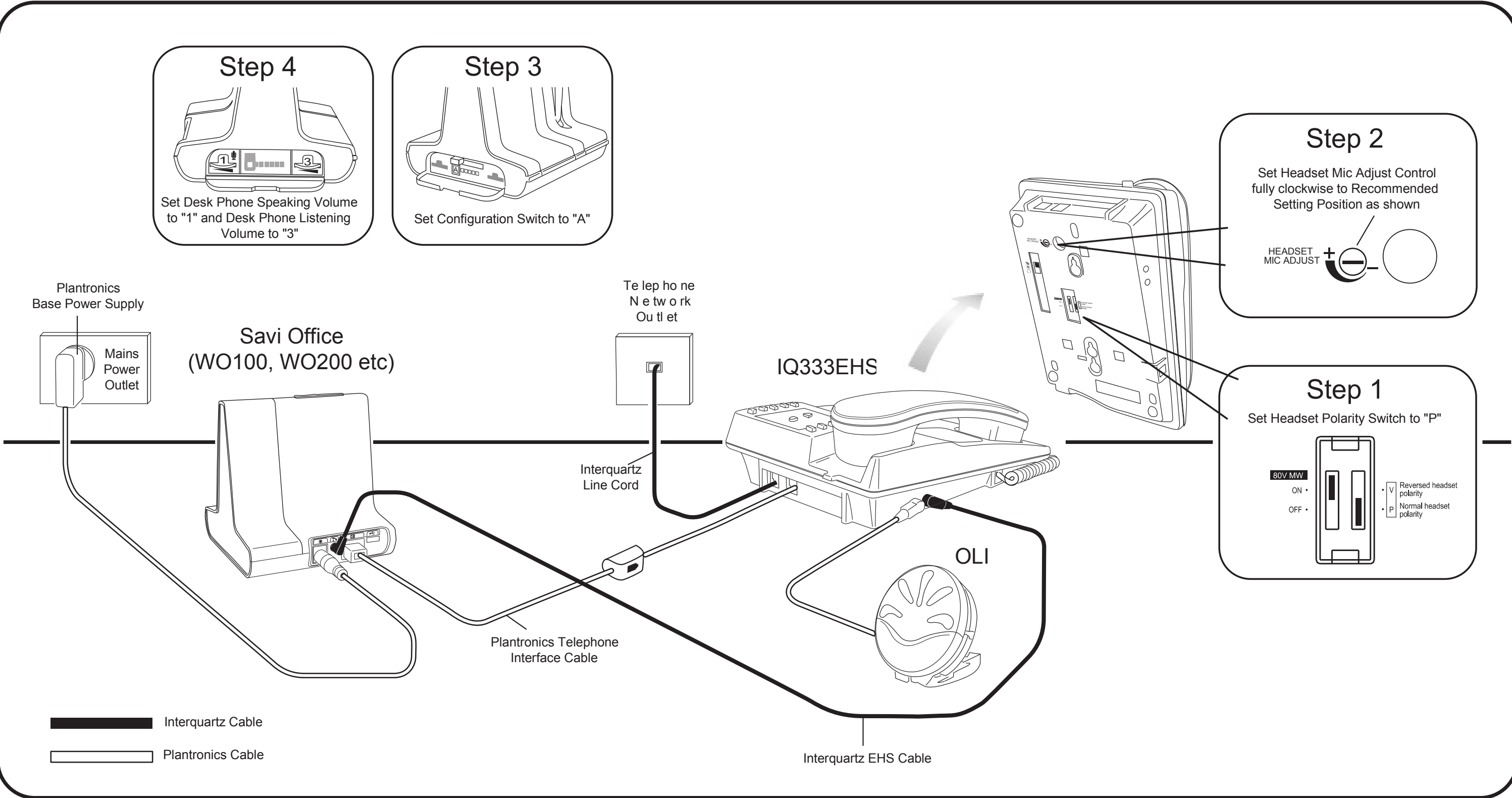
HEADSET MIC ADJUST

Step 1

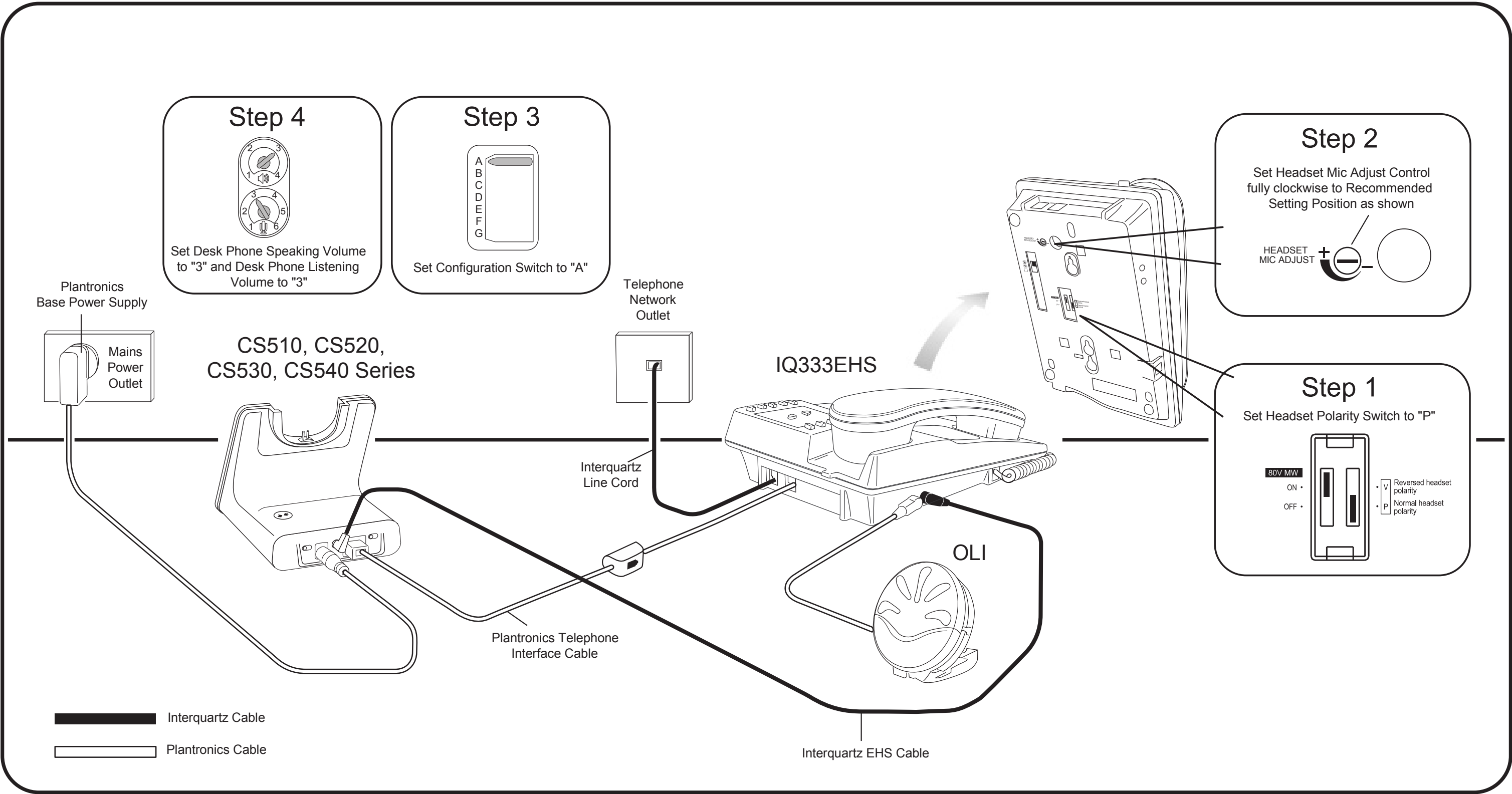
Set Headset Polarity Switch to "P"



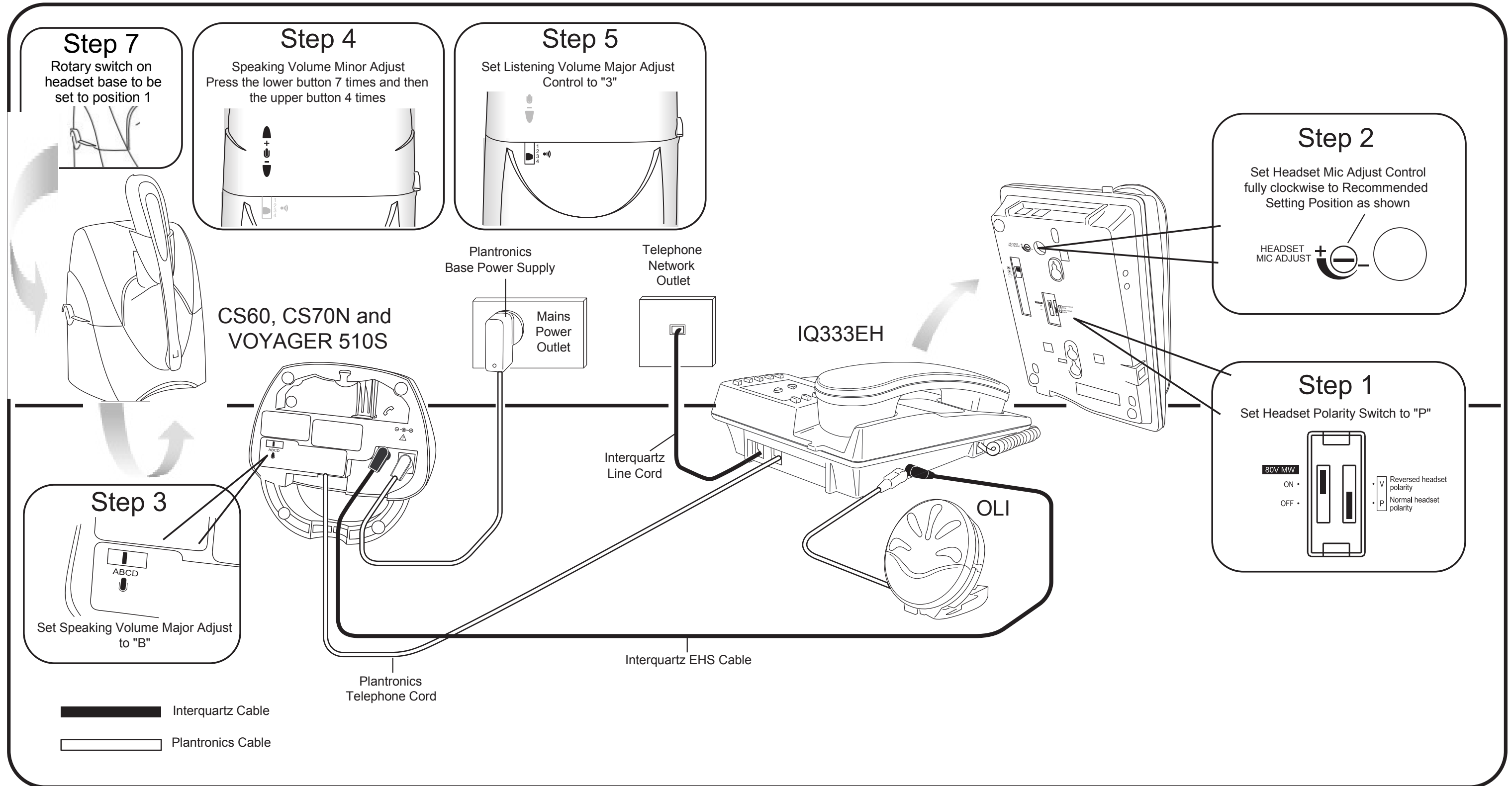
80V MW
ON • [V] Reversed headset polarity
OFF • [P] Normal headset polarity



CS510, CS520, CS530, CS540 Series & OLI Connection Diagram for IQ333EHS



CS6 SERIES, CS7 SERIES, VOYAGER 510S and OLI Connection Diagram for IQ333EHS



CS351N/A, CS361N/A and OLI Connection Diagram for IQ333EHS

