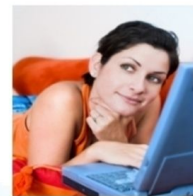


WIRELESS PHONEJack



1 minute
plug & play
installation



EFTPOS



MODEM



TELEPHONE



FAX



DECT



Add a phone socket, wherever!

The Wireless PHONEJack is based on the cordless DECT standard and is the perfect solution wherever you need an extra connection. This well-designed plug can be inserted easily and directly into any power socket anywhere in your home without the need for any annoying or visible electrical wires. The Wireless PHONEJack is a real wireless solution, offering a higher speed than standard power line communication technology.

The Wireless PHONEJack makes installation extremely simple, since it is inserted directly into the power socket without incurring any extra installation costs. Installation time is therefore much quicker, since no physical electrical wires have to be installed. Just plug a WirelessPHONEJack in and communicate. It's simple and easy.

The Wireless PHONEJack works with:

- Corded and cordless phones
- Answering machines
- Fax machines
- Dial-up modems
- Satellite set-top boxes
- All-in-one office printer with built-in fax modem

The telephone jack uses DECT technology from RTX in a special configuration, enabling modem signals to be transmitted at speeds of up to 56 Kbit/s based on the V.34 and V.90 standards. This was not possible with DECT in a normal configuration, but with RTX as the unrivalled leader in DECT, we have been able to expand from the standard 9 Kbit/s to 56 Kbit/s.



WIRELESS PHONE JACK

Features	
High wireless modem signals	High-Speed analogue V.90/V.92 and V34 modem signals with up to 56Kbit/s (minimum of 28.8Kbit/s)
Scalability	Connects up to 4 extension units to a single base unit. Voice call priority over modem and fax calls – both for parallel telephone, telephone on extension and handset
Auto conference call	Barge in (Auto conference call) between handsets and the external line
Compatible	The base unit supports GAP handsets. Internal calls support for handset
Extra extension unit	Registration of extra extension unit by easy cable connection between base and extension unit
Radio Frequency	
Interface	1.8Ghz DECT air interface using DECT/GAP authentication and encryption
Range	Up to 50m indoor and 300m outdoor
Antenna	Two PCB antennas for diversity
PSTN interface – extension unit	
Line voltage	3 intervals from base unit to extension <ul style="list-style-type: none"> ● No line: <3V ● Parallel telephone off hook: 3V > voltage > 18V ● Idle line: >25V
Ringer signal	25Hz ringer signal on extension unit
	Extension unit ringer signal (square wave) with >=50VRMS
PSTN - Base Unit	
Line interface	AS/ACIF S003 with DTMF and optional pulse dialling supported
REN	<0.1REN load from base on telephone line
CLI Support	
Standard	Bellcore 202, V.23 (EU)
	FSK DT-AS reception and generation
	FSK RP-AS reception and generation
	DTMF reception and generation in extension unit without pol-reversal
Signal content	Calling line identity
	Calling party name
Connectors	
Base station	Two RJ11 plugs on base for connection to PSTN line and plug through to other PSTN services
Extension unit	One RJ11 plug for attachment to modem, fax or telephone
Mechanics	
Dimensions	95x60x75mm
Weight	<100g
Operating temperature	10°–40°C – for indoor use only
LED signalling	MMI:1 colour (green) LED on base and 3 colour (yellow, green and orange) LEDs on extension unit
Power	
Power supply	230V +/- 10%
Power consumption	Idle mode: <1W Active mode: <3.1W Active mode ringing: <3.1W
Approvals	
Safety	AS / NZS 60950.1
DECT	• EN301406 • EN 300 444 – GAP. AS/ACIF S003:2008
EMC	EN55022
Environmental	RoHS and WEEE